



INSTITUTO DE INVESTIGACIONES
ESTÉTICAS
ARCHIVO HISTÓRICO



FONDO	BEATRIZ DE LA FUENTE
SERIE	006: DIFUSIÓN
CAJA	015
EXP.	057
DOC.	0002
FOJAS	7-11
FECHA (S)	1992

UNION COLLEGE
Graduate and Continuing Studies
Wells House
1 Union Avenue
Schenectady, NY 12308

BFGC15E37D2F4

NON-PROFIT
INSTITUTION
U.S. Postage
PAID
Schenectady, NY
Permit No. 342

DOCTORA
BEATRIZ DE LA FUENTE
CALLE DE CRESTON 221
PEDREGAL DE SAN ANGEL
VILLA OBREGON
MEXICO 21 D. F.
MEXICO

LISTENING TO NEW VOICES IN THE AMERICAS: 1492 - 1992
November 1-7, 1992

THE CONFERENCE SPONSORS

UNION COLLEGE

Founded in 1795, Union College is an independent college for men and women of high academic promise and strong personal motivation. Union, the second oldest college in New York State, offers studies in the Humanities, the Social Sciences, Engineering and Computer Science, and the Natural Sciences. Union was, in 1845, the first Liberal Arts College to add Engineering to its curriculum. Perhaps the most distinctive feature of the academic program is the existence within the liberal arts framework Union's strong engineering program. In addition, the College offers special opportunities for professional growth through its many conferences and technical institutes, which present current and invaluable information in each field covered. In 1990, Union sponsored the Fourth Annual National Conference on Undergraduate Research and in 1995 plans to sponsor the Ninth Annual Conference.

UNIVERSITY AT ALBANY, STATE UNIVERSITY OF NEW YORK

Founded in 1844, University at Albany, State University of New York is the senior campus of the SUNY system, the largest system of public higher education in the nation. As one of our university centers in that system, Albany offers undergraduate and graduate education in a broad range of academic fields at the bachelor's, master's, and doctoral degree levels. Three traditional obligations guide the University: teaching, research, and community service. The University enrolls approximately 17,000 undergraduate and graduate students in ten degree-granting schools and colleges including: The College of Humanities and Fine Arts, Science and Mathematics, the Schools of Business, Criminal Justice, Education, Public Affairs, Social Welfare, Social and Behavioral Sciences.

LISTENING TO NEW VOICES IN THE AMERICAS: 1492 - 1992

NOVEMBER 1 - 7, 1992

AN INTERNATIONAL CONFERENCE

Sponsored By:



UNION COLLEGE, SCHENECTADY, NEW YORK



UNIVERSITY AT ALBANY
STATE UNIVERSITY OF NEW YORK

In Cooperation With:

Albany International Corporation
The City of Albany
Capital Newspapers (Times Union, Albany)
Capital Area School Development Association
Capital District Council for the Social Studies
The Gazette Newspapers (Daily Gazette, Schenectady)
The Government of the Autonomous Region of Extremadura, Spain
Key Bank
The Plumsock Foundation
Rockefeller Institute of Government, SUNY Central
University at Albany Foundation
Xavier de Salas Foundation, Trujillo, Spain

Proceedings Published By:

The Government of the Autonomous Region
Extremadura, Spain



EXTREMADURA
ENCLAVE 92

CONFERENCE DESCRIPTION

With the Columbus Quincentennial at hand, this seven day international conference is designed to reflect on the evolving Americas, beginning in 1492 through the present. Scholars from the Old and New World will demonstrate how many cultures influenced this evolution. The focus will be on under-represented voices such as new immigrants, slaves, plantation workers, miners, and slum-dwellers.

Speakers will explore New World expressive forms such as oral literature, the arts and history, folk music, letters and diaries, legal grievances and prayers. The aim is to enable educators, curriculum writers, historians, anthropologists, and other social scientists to learn about these "new and unheard voices" and to transmit this knowledge to their students.

CONFERENCE FORMAT

The conference will be divided into three segments. There will be a separate registration process for each of the segments. On the enclosed registration form, you may choose the segments and days you wish to attend.

SEGMENT 1 - Discourse and the Plurality of Meaning in the Americas, 1492-1992 -

The first four days of the conference will be devoted to academic presentations by the invited scholars. Each of the four days will center on a different region of the Americas: November 1 - Mexico and Central America; November 2 - The Caribbean Basin; November 3 - South America; and November 4 - The U.S. and Canada. Presentations will be 30 minutes, followed by 45 minutes for discussion. **Papers and presentations will be in Spanish and English, with written summary translations provided. Throughout each presentation, there will be periodic, oral translations as well.**

The Keynote Address on Sunday, November 1, will be at 5:00 pm in the University at Albany Performing Arts Center, located on the SUNYA uptown campus.

With the exception of the Keynote Address, all academic presentations will be held in the Rockefeller Institute of Government at 411 State Street in downtown Albany.

SEGMENT 2 - Rediscovering America: Women in the Building of the New World -

November 5 will be devoted to examining the different roles and contributions women have made in the shaping of the Americas. International scholars will report on their latest research about the presence of women in the Old and New Worlds, exploring the essential, but often neglected, gender and race centered issues that were integral to the New World's development. This segment will be in the Campus Center Assembly Hall on the SUNYA campus from 9:00 am - 4:00 pm.

SEGMENT 3 - Race, Ethnicity, and National Identity in the Americas: A Select Seminar for Primary and Secondary Educators on Multi-Culturalism -

The final two days of this conference, November 6 and 7, will be held in the College Center of Union College. Registrants will be expected to attend both days, and there is one fee of \$40.00 per person. On Friday, lunch will be available in the College Center restaurant or at local restaurants; on Saturday, a catered luncheon will be provided at \$8.00 per person.

This segment will be a working seminar for educators who will share ideas on how to incorporate into their teachings the contributions of the many under-represented cultures of the Americas. The program format for sharing these ideas will be small group discussions and curriculum planning sessions. Sessions will focus on ideas for practical dissemination and interpretation in classroom contexts for middle and high school level students. The goal is to suggest new sources and approaches for teaching social studies, history, arts and literature. Prior to the planning sessions, all participants will receive copies of papers presented during Segment I and II.

Twenty educators in the social sciences, literature, and foreign languages will be selected from among the registrants for this segment to attend and report on at least one of the presentations from Segment I and II. The registration fees for these persons to attend all conference segments will be waived in return for their services. **Anyone interested in applying to be selected as a liaison between Segment I, II, and III should call Dr. Patrick Allen, Director of Educational Studies, Union College, at #518-370-6361.**

The expectation is that a substantial number, if not a majority, of people attending the last two days of the conference will have attended at least one of the first five days of academic presentations. Therefore, they will have the advantage of being exposed directly to the information and ideas presented by the international scholars.

WHO SHOULD ATTEND?

This conference will bring together **educators, curriculum writers, historians, anthropologists and other social scientists** for the purpose of understanding and interpreting under-represented contributors to the cultural history of the Americas. The hope is that those attending will be able to share the information received at the conference with their constituents and incorporate their findings into school curricula, textbooks, and research articles.

KEYNOTE ADDRESS

SUNDAY

NOVEMBER 1, 1992

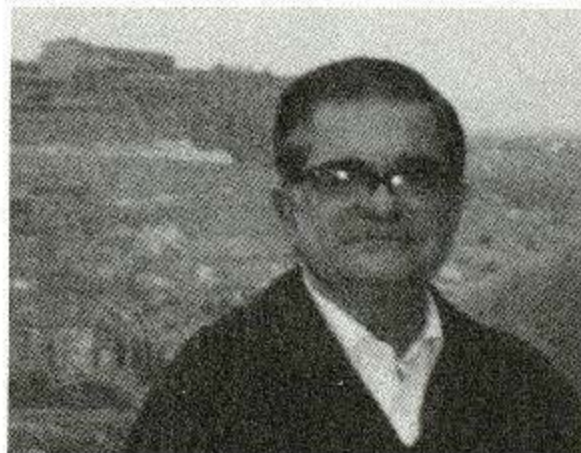
5:00 pm, Performing Arts Center

Uptown Campus of State University at Albany

Dr. Miguel León-Portilla

Universidad Nacional Autónoma de México

**"Death, Remembrance and Creation
In Mesoamerican Thought"**



Dr. Miguel León-Portilla is Director of the Instituto de Investigaciones Históricas at Mexico's leading university, the Universidad Nacional Autónoma de México. He is one of Mexico's most distinguished intellectuals, a stature which was recognized by his country in naming him Ambassador of Mexico to UNESCO in Paris, a position that he held from 1987 to 1992.

Dr. León-Portilla is recognized by many as the greatest living authority on Ancient Aztec Civilization. He is the author of several books on the subject, including: Precolumbian Literatures of Mexico: The Broken Spears: An Aztec Account of the Spanish Conquest; and a book published this year called, The Aztec Image of Self and Society: An Introduction to Nahua Culture.

CONFERENCE TOPICS AND SPEAKERS

Please refer to the program schedule in this brochure for the conference topics and the many speakers giving presentations during the entire conference. Specific dates and times of the academic lectures are listed. **The program schedule will also show which presentations will be spoken in English and which in Spanish.**

SPECIAL EVENTS

Gala Reception

On Sunday, November 1, all conference presenters and attendees are invited to attend the conference's Gala Reception in the University Art Museum, Fine Arts Building, following the keynote address. The cost of this reception is included in the registration fee and will take place in conjunction with a ritual procession commemorating the Mexican festival called "The Day of the Dead." These events will be held in the midst of a Mexican Folk Art Exhibit entitled "Living Traditions: Mexican Popular Arts" at the Gallery. **Please check the box on the registration form if you plan to attend this function.**

CONFERENCE PROCEEDINGS

Proceedings from this conference will be published in both English and Spanish, but they will not be available for sale until mid-year 1993. The Quincentenary Commission of the Government of the Autonomous Region of Extremadura, located in western Spain, will finance and organize the publication of the proceedings. Extremadura has a special interest in our conference's subject matter because this region is the birthplace of Cortes, Pizarro, Balboa, and Orellana - all key figures in the cultural development of the Americas. Since 1986, Extremadura has supported a series of conferences about the encounter of the New and Old Worlds in the Americas, and is committed to continue its support for this international conference.



There will be a sign-up sheet at the conference registration desk on-site if you wish to order and purchase the proceedings from this conference.

PROGRAM

BFGCL5E57D2F8

SEGMENT I

SUNDAY, NOVEMBER 1 Rockefeller Institute of Government REGION TOPIC -- MEXICO	MONDAY, NOVEMBER 2 Rockefeller Institute of Government REGION TOPIC -- MEXICO, CENTRAL AMERICA & THE CARIBBEAN	TUESDAY, NOVEMBER 3 Rockefeller Institute of Government REGION TOPIC -- SOUTH AMERICA	WEDNESDAY, NOVEMBER 4 Rockefeller Institute of Government REGION TOPIC -- NORTH AMERICA
9:00 am CONTINENTAL BREAKFAST	8:45 am CONTINENTAL BREAKFAST	8:45 am CONTINENTAL BREAKFAST	8:45 am CONTINENTAL BREAKFAST
9:30 am <i>Welcoming Remarks: The Honorable Thomas Whalen, Mayor of the City of Albany, NY.</i> Dr. Patrick Swygert, President of the University of Albany, NY.	9:00 am S <i>Nahuatl Indian Cultural Renewal Movement in Mexico City.</i> Librado Silva Galeana, Universidad Nacional Autónoma de México.	9:00 am S <i>Indian and Mestizo Voices in Colonial Andean Literature</i> Carmen Muñoz Bernard, University of Paris-Nanterre.	9:00 am E <i>Marriage, Class, and Identity: Testimonial Sources from the Alta California Frontier, 1780-1850.</i> Theresa Meade, Union College, Schenectady, NY.
10:00 am <i>Introduction to the Conference</i> Gary H. Gossen, University of Albany, SUNY.	10:00 am E <i>Revitalization of Maya Culture through Literature.</i> Victor Montejo, University of Connecticut.	10:00 am BREAK	10:00 am E <i>The Creation of U.S. Latino Identity in the 20th Century.</i> Jorge Klor de Alva, Princeton University, NJ.
10:15 am E <i>The Evolution of Nahuatl (Aztec) Literature</i> Miguel León-Portilla, Universidad Nacional Autónoma de México.	11:00 am E <i>The Cultural Renewal Movement of the Highland Maya of Chiapas, Mexico.</i> Jacinto Arias Pérez, Instituto Chiapaneco de Cultura.	10:30 am S <i>Quechua (Inca) Painted Ceremonial Vessels as Cultural Texts.</i> Jorge Flores Ochoa, Universidad de Cuzco.	11:00 am E <i>Women and Manifest Destiny: Gender Relations in Anglo-American Folk Music.</i> Gary H. Gossen, University at Albany, SUNY.
11:15 am S <i>Mexican Indian Art and Iconography of the Contact Period</i> Beatriz de la Fuente, Universidad Nacional Autónoma de México.	12:00 LUNCH ON OWN	11:30 am <i>General Discussion: Is there a Pan-Andean "Identity?"</i>	12:00 LUNCH ON OWN
12:15 LUNCH ON OWN	1:30 pm E <i>Art forms and Pan-Indian Cultural Identity in the Political Crisis of Guatemala in the 1970's & 1980's.</i> Arturo Arias, San Francisco State University, CA.	12:00 LUNCH ON OWN	1:30 pm E <i>Afro-American Identity as Expressed in Black Folk Literature.</i> Roger Abrahams, University of Pennsylvania.
1:30 pm E <i>How to Read Mexican Folk Art</i> Marta Turok, Asociación Mexicana de Arte y Cultura Popular." (Dr. Turok is the Guest Curator of the Mexican Folk Art Exhibit that will be the site of the reception this evening.)	2:30 pm S <i>Indian Women in the Creation of Hispanic Caribbean Identity.</i> Jalil Sued Bedillo, University of Puerto Rico.	1:30 pm E <i>Carnival as Brazil's "Self-Interpretation"</i> Roberto Da Metta, University of Notre Dame, IN.	2:30 pm E <i>Contested Racial Identity in Contemporary Pinksterfest Celebrations.</i> Linda Pershing, University at Albany, SUNY.
2:30 pm S <i>From Revelation to Reconstruction in Yucatec Maya Indian Identity</i> Manuel Gutiérrez-Estévez, Universidad Complutense de Madrid.	3:30 pm BREAK	2:30 pm E <i>The Absent Indian and Uruguayan National Identity</i> Helen Elam Regueiro, University at Albany, SUNY.	3:30 pm BREAK
5:00 pm E KEYNOTE LECTURE: <i>Death, Remembrance and Creation in Mesoamerican Thought</i> Miguel León-Portilla, Universidad Nacional Autónoma de México. (SUNYA Performing Arts Center)	4:00 pm E <i>Afro-American Voices in the English-Speaking Caribbean.</i> George Gmelch, Union College, Schenectady, NY.	3:30 pm BREAK	4:00 pm <i>General Discussion of Main Themes and Issues from the Conference.</i>
5:30 pm <i>Candle Light Procession for "The Day of the Dead."</i> (SUNYA Performing Arts Center)	5:00 pm CLOSURE	4:00 pm E <i>Sacred Narrative as a Cultural Survival Strategy in Lowland Indian South America.</i> Johannes Wilbert, University of California, Los Angeles.	5:00 CLOSURE
5:45 pm GALA RECEPTION Art Gallery. The Gallery will be open 5:45-8:00 pm for viewing a major exhibit, "Living Traditions: Mexican Popular Arts."		5:00 CLOSURE	

*S = SPANISH SPEAKING LECTURE *E = ENGLISH SPEAKING LECTURE

SCHEDULE

BF6C15E57D2F9

SEGMENT II

SEGMENT III

THURSDAY, NOVEMBER 5 Campus Center Assembly Hall, SUNYA	FRIDAY, NOVEMBER 6 Union College	SATURDAY, NOVEMBER 7 Union College
REDISCOVERING AMERICA: WOMEN IN THE BUILDING OF THE NEW WORLD	7:30 CONTINENTAL BREAKFAST	9:30 am CONTINENTAL BREAKFAST
A one day segment sponsored by the Center for Latin America and the Caribbean (CELAC).	8:40 am <i>General Session</i> Reports from the first four days	10:30 am <i>Small Group Sessions</i> (Curriculum Planning)
8:30 am <i>Conference Registration</i>	10:00 am BREAK	12:00 CATERED LUNCH (extra fee) **See registration form
9:00 am - 12:00 noon <i>Welcome</i> Edna Acosta-Belen Conference Chair	10:40 am <i>Small Group Sessions</i>	1:15 pm <i>Small Group Sessions</i> (Curriculum Planning)
<i>Women's Response to Colonialist Domination: The Reproduction of Pre-Conquest Cultures in the Domestic Sphere</i> E June Nash, City College, CUNY.	12:00 LUNCH ON OWN	2:30 pm <i>Group Reports</i> Closing Activities
<i>Women in the Early Caribbean</i> S Jalil Sued Badillo, University of Puerto Rico.	1:15 pm <i>Small Group Sessions</i>	
<i>La Malinche as the New World Eve: Constructions of Gender, Ethnicity, and Nationalism</i> E Sandra Messinger Cypess, SUNY Binghamton	2:30 pm <i>Wrap-up</i>	
12:00 LUNCH ON OWN		
1:00 - 4:00 pm <i>Gender and Slavery in the Caribbean</i> E Marietta Morrissey, University of Toledo, OH.		
<i>Women in Early Twentieth Century Industrial Labor: A Neglected Chapter in Latin American History</i> E Asuncion Lavrin Howard University.		
<i>The 'Terrestrial' Paradise from Within: The Writings of Latin American Nuns</i> E Electa Arenal Staten Island College, CUNY.		

PROGRAM SCHEDULE

*NOTE: BRIEF ENGLISH TRANSLATIONS WILL BE PROVIDED FOR SPANISH SPEAKING LECTURES

GENERAL CONFERENCE INFORMATION

Conference Dates and Locations

Segment I	- The Rockefeller Institute of Government, SUNY	(November 1-4)
Segment II	- The Campus Center Assembly Hall, SUNY	(November 5)
Segment III	- The College Center, Union College	(November 6-7)

Conference Registration

Those interested in attending this conference must pre-register no later than October 16. To register for any segment of the conference, please complete the registration form in this program and mail to Suzanne Petersen, Conference Coordinator, Union College, 1 Union Avenue, Schenectady, NY 12308 with your payment. Please call Suzanne at #518-370-6672 with any questions you may have about registration. You may also FAX your registration by using a credit card or purchase order for payment to Union College at #518-370-6875.

We are pleased to offer a reduced conference registration fee based on funding from local businesses and organizations concerned with the topic. On the registration form, please check which days you will be attending and include the appropriate payment. For faculty, administrators and business professionals, the fee is \$20 per day. For students, the fee is \$10 per day.

Your daily registration includes: the gala reception on November 1, the refreshment breaks, attending the day's presentations, and receiving the hand-outs from those lectures you attend. Your registration will be confirmed by mail with an acknowledgment letter, maps of both college campuses and directions to the conference locations.

Lunches and the complete packet of all conference presentations are not included. If you wish to purchase the completed packet of presentations from the entire seven days of the conference, you may do so at the conference registration desk on-site. The cost per packet will be \$45.00.

Lodging

A block of hotel rooms has been reserved at the Ramada Inn on Western Avenue in Albany, NY (#518-489-2981) and the Holiday Inn on Nott Terrace in Schenectady, NY (#518-393-4141). Reduced rates are available to conference registrants; however, you must mention you are attending this conference to receive the room discount. The special rates will be in effect until October 16. Call either hotel to make your reservation.

Travel Arrangements

The official travel agency for this event is Albany Area Travel Consultants, Inc. Travel Agent Beth Chiochio will be happy to make your airline or train reservations to attend this conference. Special travel discounts will be granted for our registrants. Call her at #518-869-2271.

CONFERENCE PATRONS

We would like to give our sincere thanks to all those businesses and organizations who helped fund this event. Without their support, we would not have been able to offer such an extensive program, inviting so many experts from around the world. In alphabetical order, the following patrons are:

Albany International Corporation
 The City of Albany
 Capital Newspapers (Times Union, Albany)
 Capital Area School Development Association
 Capital District Council for the Social Studies
 The Gazette Newspapers (Daily Gazette, Schenectady)
 The Government of the Autonomous Region of Extremadura, Spain
 Key Bank
 The Plumsock Foundation
 Rockefeller Institute of Government, SUNY Central
 University at Albany Foundation
 Xavier de Salas Foundation, Trujillo, Spain

